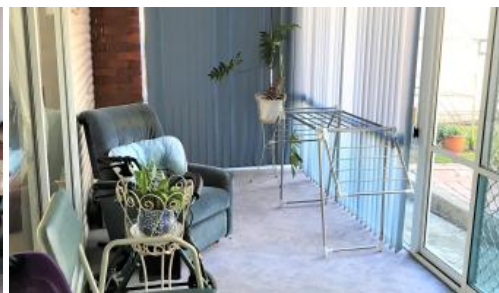
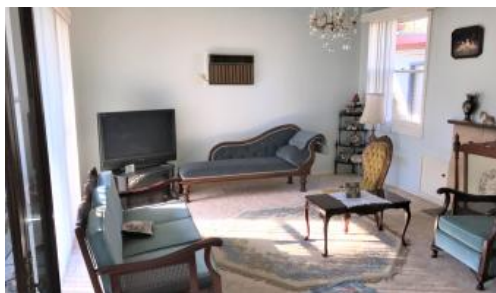


SOLD



250 Church St, Gloucester



Vendor Says Sell !!

This well known 3 bedroom home built by Ted Woolford over 55 years ago was one of the first properties built in that area. It has always had commanding views towards the Bucketts and over Gloucester farmland.

True to its original form the house has high ceilings, large windows and is carpeted in the bedrooms, formal dining and lounge. Two car parking with lock up garage and carport.

This property still maintains the character and charm of yesteryear internally and due to its good and liveable design could be renovated with all modern features very easily.

The gardens are low maintenance and the backyard level and fully fenced. There is plenty of room to move on this large block.

A property ready to make your own, sensibly priced.

The above information provided has been furnished to us by the vendor/s. We have not verified whether or not that information is accurate and do not have any belief in one way or the other in its accuracy. We do not accept any responsibility to any person for its accuracy and do no more than pass it on. All interested parties should make and rely upon their own inquiries in order to determine whether or not this information is in fact accurate.

3 Beds 2 Baths 2 Cars

1,031 m2

Price	SOLD
Property Type	Residential
Property ID	17
Land Area	1,031 m2

Agent Details

John Hannaford - 0419 249 565

Office Details

Hannaford Stock & Land Australia
51 Church St Gloucester NSW 2422
Australia
02 6558 1309

